

Pasadena Now presents

Pasadena Living
PASADENA'S ONLINE GLOSSY MAGAZINE

SHOPPING + SALES
BEAUTY
HEALTH
AT HOME
IN THE GARDEN

REAL ESTATE
FASHION & STYLE
FOOD & DRINK
RESTAURANTS & BARS
ITS ALL ABOUT YOU

CLICK TO RETURN TO MAIN
PASADENA NOW SITE



Search here...



A Beautiful Craftsman Revival Residence Nestled in the Exclusive Bradbury Estates

238 Barranca Road, Bradbury, CA 91008

By MICHAEL B. BELL

Monday, July 17, 2017 | 4:30 pm

[Tweet](#)



Share

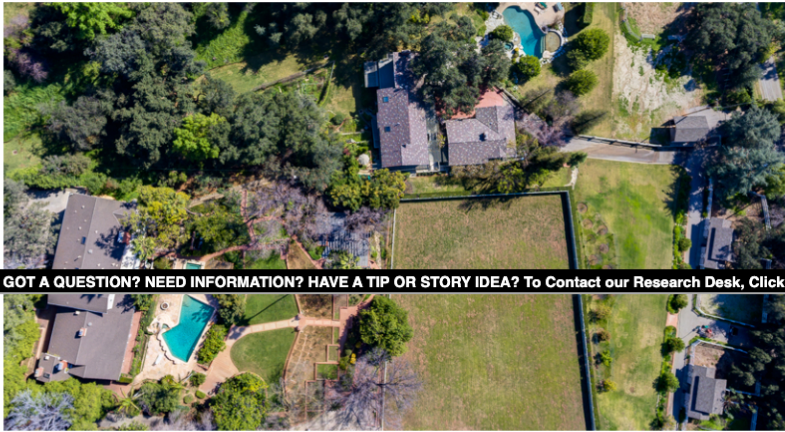


51K+



Share

2



GOT A QUESTION? NEED INFORMATION? HAVE A TIP OR STORY IDEA? To Contact our Research Desk, Click [↗](#)

Nestled in the prestigious, guard-gated community of Bradbury Estates, this Craftsman revival residence with 2 separate guest units offers 4,899 sq.ft. with 7 bedrooms and 5 baths.

238 Barranca Road & 169 Circle Drive | Bradbury, CA | Bradbury Estat...

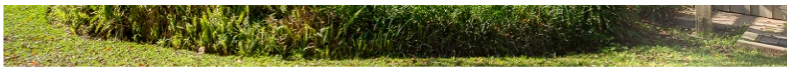


Watch later



Share

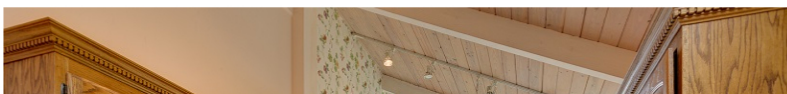




A rare, unique development opportunity exists with the purchase of the adjacent 169 Circle Drive property and would offer over 5 acres of combined land for your dream house and is accessible from 2 streets.

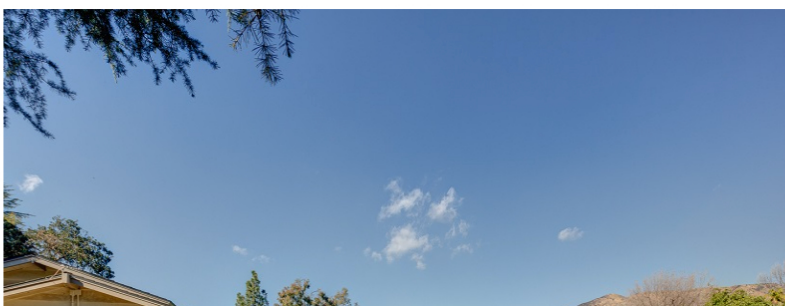


Beyond the private gates, the park-like grounds are perfect for entertaining and boast spectacular views of the mountains and valley.





Amenities include resort-style pool, spa, greenbelts, waterfall, koi pond, built-in outdoor BBQ kitchen, mature trees, lush gardens, and equestrian facilities including 2 barns, 1-acre horse pasture, and an arena area. The two guest units feature separate suites each with their own kitchen, bedroom, and bath.





Ample parking space is available with a 2-car garage and long driveway perfect for entertaining guests. Located just minutes away from Los Angeles, this unique enclave and expansive compound offers the exclusivity and privacy that you desire.





A rare, unique development opportunity exists with the purchase of both properties ([169 Circle Drive, Bradbury, CA 91008](#)) and would offer over 5 acres of combined land for your dream house and is accessible from two streets.

Main Points:

Bedroom(s): 7
Bathroom(s): 5
Floor size: 4,899 sqft (approx.)
Lot size: 142,997 sqft (approx.)
Year built: 1970

Offered at \$2,749,888

For more information about the property, visit www.bradburycompound.com.

Michael B. Bell

License: 1164731
Sotheby's International Realty
Office: (626) 796-4100
michaelbbell.com
michael.bell@sothebyshomes.com



Why Should You Buy a Home in Pasadena?



A Beautiful Craftsman-Style Home with Large Yard in Historic Garfield Heights, Pasadena



A Stunning Craftsman Style Home Located at North Grand Avenue Pasadena



PASADENA NOW

Pasadena Now has been published daily since April, 2004 and is among the very oldest continuously operated community news websites in the U.S.

Pasadena Now strives to publish a full spectrum of news and information articles in service to the entire community. The publication will remain free to readers and will not erect paywalls.

Pasadena Now strives to provide factual, unbiased reporting. Our opinion section is open to all.

© 2014 PASADENA NOW, LLC. ALL RIGHTS RESERVED

COMPANY INFO

CONTACT

CONNECT & SHARE

RSS FEEDS

