

Pasadena Now presents

**Pasadena Living**  
PASADENA'S ONLINE GLOSSY MAGAZINE

SHOPPING + SALES  
BEAUTY  
HEALTH  
AT HOME  
IN THE GARDEN

REAL ESTATE  
FASHION & STYLE  
FOOD & DRINK  
RESTAURANTS & BARS  
ITS ALL ABOUT YOU

CLICK TO RETURN TO MAIN  
PASADENA NOW SITE



Search here...



## Exclusive, Gated 5+ Acre Compound in Guard-Gated Bradbury Estates

169 Circle Drive, Bradbury, CA 91008

By MICHAEL B. BELL

Friday, July 7, 2017 | 8:32 pm

[Tweet](#)



Share

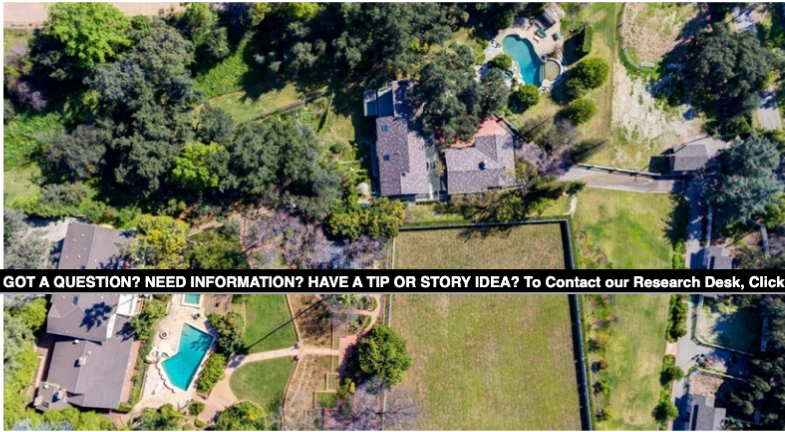


51K+



Share

13



GOT A QUESTION? NEED INFORMATION? HAVE A TIP OR STORY IDEA? To Contact our Research Desk, Click [↗](#)

Nestled in the prestigious, guard-gated community of Bradbury Estates, this Monterey Colonial residence offers 5,049 sqft with 6 bedrooms and 5 baths.

238 Barranca Road & 169 Circle Drive | Bradbury, CA | Bradbury Estat...



Watch later



Share

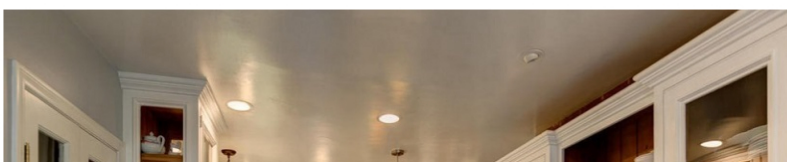


A rare, unique development opportunity exists with the purchase of the adjacent 238 Barranca Road property and would offer over 5 acres of combined land for your dream house and is accessible from 2 streets.





Beyond the private gates, the park-like grounds are perfect for entertaining and boast spectacular views of the mountains and valley. Amenities include a covered porch overlooking resort-style pool, spa, greenbelts, waterfall, koi pond, built-in outdoor BBQ kitchen, mature trees, and lush gardens.







Ample parking space is available in the oversized 3-car garage with extra storage space and a long, circular driveway perfect for hosting guests. Located just minutes away from Los Angeles, this unique enclave and expansive compound offers the exclusivity and privacy that you desire.





*A rare, unique development opportunity exists with the purchase of both properties ([238 Barranca Road, Bradbury, CA 91008](#)) and would offer over 5 acres of combined land for your dream house and is accessible from two streets.*

#### **Main Points**

Bedroom(s): 6  
 Bathroom(s): 5  
 Floor size: 5,049 sqft (approx.)  
 Lot size: 88,115 sqft (approx.)  
 Year built: 1949

**Offered at \$3,749,888**

For more information about the property, visit [169circledrive.com](http://169circledrive.com).

#### **Michael B. Bell**

License: 1164731  
 Sotheby's International Realty  
 Office: (626) 796-4100  
[michaelbell.com](http://michaelbell.com)  
[michael.bell@sothebyshomes.com](mailto:michael.bell@sothebyshomes.com)



A Beautiful 1914 Craftsman Home Located in the Historic Highlands Landmark District, Pasadena



A Beautiful Bungalow Style Home Located at North Hill, Pasadena



A Sophisticated, Contemporary Bob Ray Offenhauser Designed Villa Located in Pasadena



# PASADENA NOW

Pasadena Now has been published daily since April, 2004 and is among the very oldest continuously operated community news websites in the U.S.

Pasadena Now strives to publish a full spectrum of news and information articles in service to the entire community. The publication will remain free to readers and will not erect paywalls.

Pasadena Now strives to provide factual, unbiased reporting. Our opinion section is open to all.

## COMPANY INFO

CONTACT

## CONNECT & SHARE

RSS FEEDS



© 2014 PASADENA NOW, LLC. ALL RIGHTS RESERVED