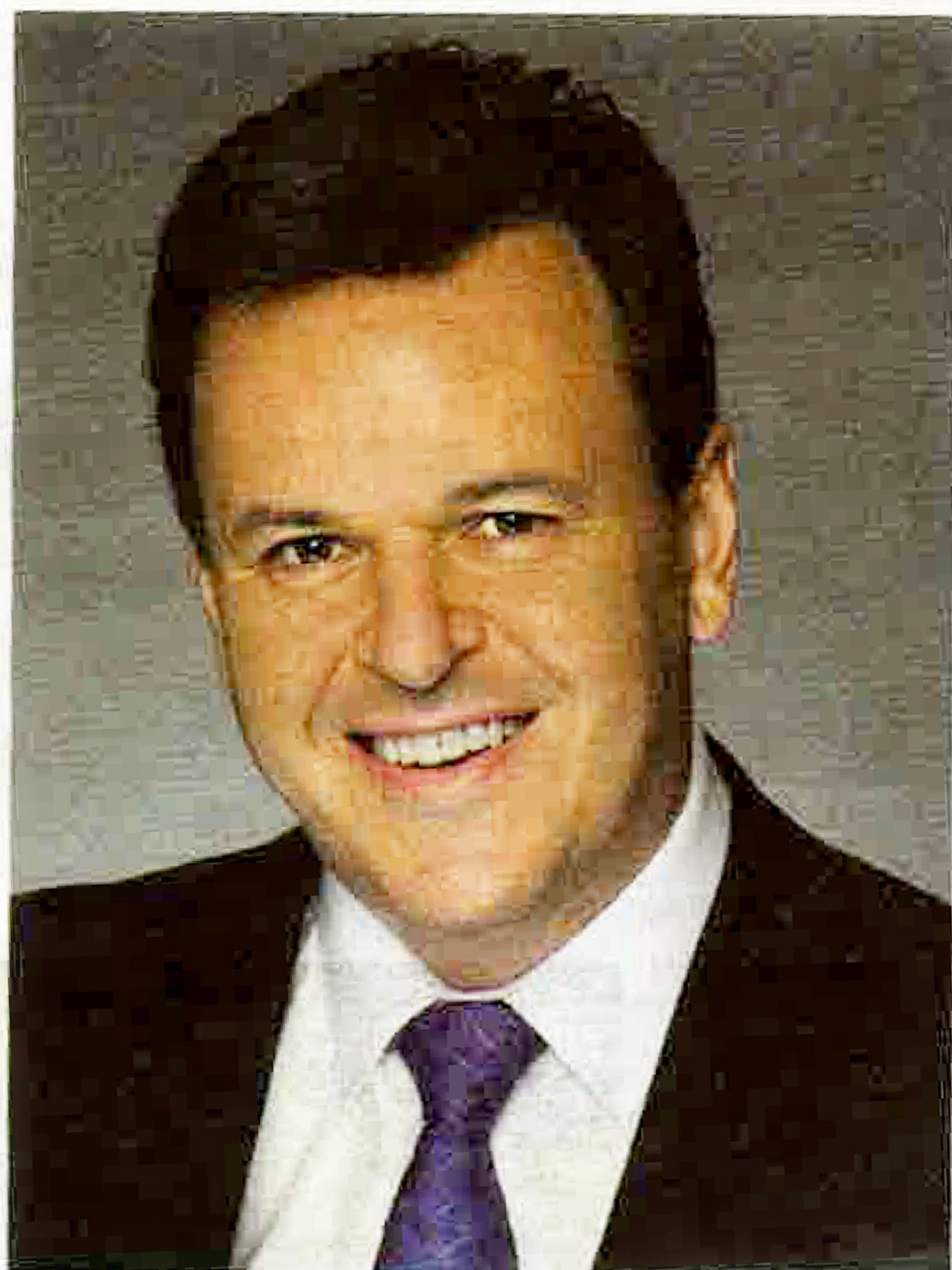


Sotheby's

INTERNATIONAL REALTY

They say you are known by the company you keep. We are fortunate to be known for the exceptional agents that distinguish us in communities all over the world. Today in our Pasadena office, we are pleased and proud to announce a new exceptional association.



ASSOCIATION

Michael B. Bell has successfully handled close to \$500 million in sales, and is nationally ranked in the top 0.1% according to the Wall Street Journal. As a high level fiduciary seller specialist, Michael's clients are professionally guided to maximize value in a very reasonable amount of time. Michael is a highly referred specialist, now in his 20th year in the industry.

Michael B. Bell

Broker Realtor®, CalBRE 01164731
office 626.796.4100 | cell 626.354.8505
michaelbbell.com
michael.bell@sothebyshomes.com

Presented by Sotheby's International Realty's

Pasadena Brokerage

800 East Colorado Boulevard, Suite 150, Pasadena, CA 91101 | 626.229.0909
sothebyshomes.com/pasadena

Sotheby's International Realty and the Sotheby's International Realty logo are registered (or unregistered) service marks used with permission. Operated by Sotheby's International Realty, Inc.